



# PASS 4.0-ECP

## Education Collaboration Platform



Ed-Interact

### Introducing Plans and Alerts for Student Success 4.0-ECP

PASS Provides powerful, easy-to-use at-risk detection and innovative intervention management capabilities delivered in a web-based user interface available 24 hours a day, 7 days a week to administrators and teachers alike.

District Staff can select between or across multiple schools, School administrators are limited to students in their school and teachers are limited to students only in their classes.

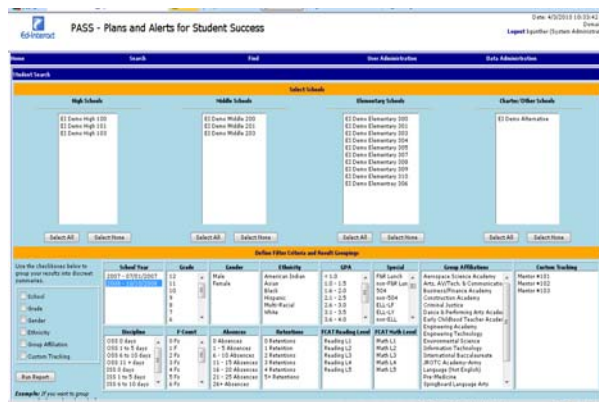
Select students by searching academic/behavioral attributes in the form of Gender, Ethnicity, Standardized Testing, Retention, ESE/ELL status, OSS/ISS counts, F Counts, GPA, Attendance, F&R Lunch and Group Affiliation.

Once the selection criteria has been determined, grouping of results can be achieved on a variety of qualifiers allowing results to provide even more information.

Take action with any set of results by assigning interventions to groups or individuals. Districts and schools may create their own interventions in the form of Adobe PDF forms and documents, known collectively in PASS as Plans. Interventions can exist as curriculum and non-curriculum related content such as self-study, self-assessment and assessment materials, disciplinary forms, attendance contracts, progress notes, administrative notes, teacher-parent/guardian correspondence.

Self assessment and assessment PDF forms can be built to auto-score in a manner that is detected by the PASS system, and every plan that is uploaded into PASS has the option of being displayed in an online grade book.

With PASS 4.0, Plans can be created and assigned to any user role, so teachers can be assigned material for self-study, self-assessment and assessment just as easily as students. This allows districts and schools to effectively track and record student intervention and teacher effectiveness.



Ed-Interact, Inc. has designed the PASS-ECP for the At-Risk Early Identification, Stabilization and Remediation of student achievement and behavior.

#### Identify Cross-Sections of At-Risk or High Achievers By

- o Absent/Tardy Ranges
- o Academic Grades
- o Retention Ranges
- o Discipline Ranges
- o Test Scores Ranges

#### Intervene to Stabilize Population Utilizing

- o Improvement Plans
- o Assessments
- o Surveys
- o Student Contracts

#### Remediate Root Cause of Student Issues By

- o Electronically Deploying/Monitoring Any Methodology (Either Purchased 3rd party or Homegrown)
- o Setting Notifications for Revisiting Forms on Defined Intervals
- o Allows for Admin, Teacher, Parent, Student & Mentor Involvement

#### Ideal for Addressing Requirements of Programs Such As

- o Response to Intervention
- o Professional Learning Communities
- o Differentiated Instruction
- o And Numerous Others...



Student	Anonymous	File Name	Student ID	Grade	
Student1512		3rd Grade Basic Math Self Study	33111512	09	
Date of Birth:	School:	Course:	Class/Subject:		
06/20/1991	Ed Demo High 100				
File Type (Check One):	GPA:	Testing Level: Reading:	Math:	Science:	
Academic Interventions					
Student Self Study			80		
Total Score:	81				
1) (7 + 10) - 3	Show	2) 7 + 10 - 3	Show	3) 7 + (10 - 3)	Show
17 - 3		17 - 3		7 + 7	
14		14		14	
Answer: 14	✓	Answer: 14	✓	Answer: 14	✓
4) 9 + (16 - 2) + 7	Show	5) (9 + 16) - 2 + 7	Show	6) 9 + 16 - (2 + 7)	Show
9 + 14 + 7		9 + 16 - 9		25 - 9	
23 + 7		30		16	
Answer: 30	✓	Answer: 30	✓	Answer: 16	✓
7) (3 * 5) - 2	Show	8) 3 * (5 - 2)	Show	9) 3 * 5 - 2	Show
15 - 2		3 * 3		15 - 2	
13		9		13	
Answer: 13	✓	Answer: 9	✓	Answer: 13	✓
10) 8 + (16 ÷ 4) - 2	Show	11) (8 + 16) ÷ 4 - 2	Show	12) 8 + 16 ÷ (4 - 2)	Show
8 + 20 - 2		24 ÷ 4 - 2		8 + 16 / 2	
28 - 2		6 - 2		8 + 8	
26		4		16	
Answer: 26	✓	Answer: 4	✓	Answer: 16	✓

Submit

Reset

Sample Plan: Basic Math Grouping Self-Assessment



# PASS 4.0-ECP

## Education Collaboration Platform



## Ed-Interact

### Contact Information:

**Phone:** 813.368.3290

**Sales:** sales@edinteract.com

**Info:** info@edinteract.com

### Applicable Funding Sources:

- Funding Programs
- Title I, Part A
- Title I, Part A—SES
- Title II, Part D—Enhancing Education through Technology
- Title III—English Language Acquisition
- 21st Century Community Learning Centers
- Enhancing Education through Technology
- IDEA, Part B
- IDEA, Response to Intervention

**License PASS, PASS Plus or PASS Premium Today!**

PASS	PASS Plus	PASS Premium
Includes At-Risk Detection functionality for Teachers, School Administration, Principals and District Administrators.	Includes all <b>PASS</b> capabilities <i>and</i> Plan Management.	Includes all <b>PASS Plus</b> capabilities <i>and</i> Parent/Guardian, Student and Mentor Logins
<ul style="list-style-type: none"> <li>• At-Risk Detection</li> <li>• User Roles: District Admin, Principal, School Admin and Teacher</li> </ul>	<ul style="list-style-type: none"> <li>• At-Risk Detection</li> <li>• User Roles: District Admin, Principal, School Admin and Teacher</li> <li>• Plan Management</li> </ul> <p><b>Facilitates:</b></p> <ul style="list-style-type: none"> <li>• Intervention Management</li> <li>• Principal Planning Book</li> </ul>	<ul style="list-style-type: none"> <li>• At-Risk Detection</li> <li>• User Roles: District Admin, Principal, School Admin, Teacher, Parent/Guardian, Student and Mentor</li> <li>• Plan Management</li> </ul> <p><b>Facilitates:</b></p> <ul style="list-style-type: none"> <li>• Intervention Management</li> <li>• Principal Planning Book</li> <li>• Teacher Effectiveness</li> <li>• RtI Effectiveness Measurement</li> <li>• Differentiated Instruction</li> <li>• Teacher Planning Book</li> </ul>

**Contact us today to arrange for a webinar!**